



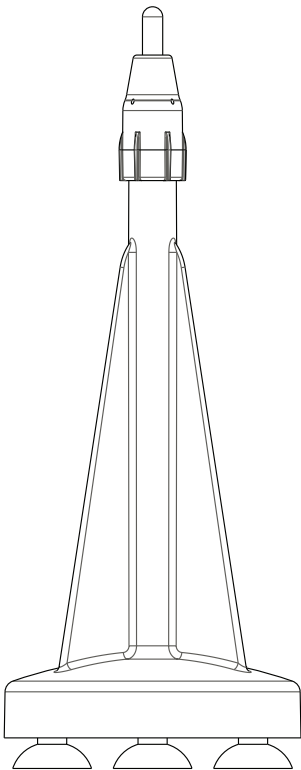
Rinse-o-matic®

Blender Container Rinser

ALL MODELS

Use and Care Manual

Read and save these instructions

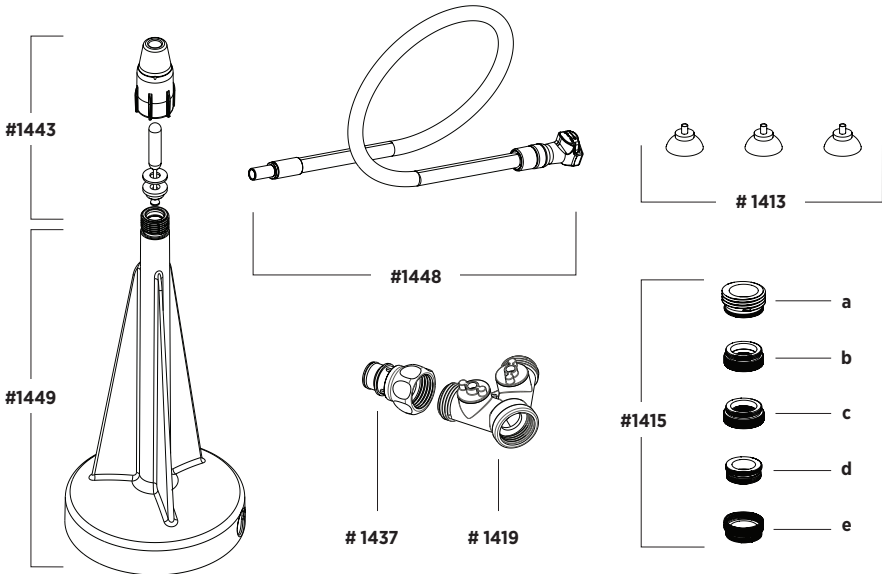


PARTS LIST

Rinse-o-matic®

Item #	Description
#1449	Base Assembly
#1443	Sprayhead / Activator Kit <i>Includes: a. Sprayhead, b. Valve Assembly</i>
#1413	Suction Cup Feet (Set of 3)
#1448	Hose Assembly with Quick Disconnect
#1437	Quick Disconnect Insert
#1419	Y Faucet Connector
#1415	Faucet Adapter Kit (Set of 5)

Note: Your Rinse-o-matic may not include all of the items above



INSTALLATION INSTRUCTIONS

Rinse-o-matic Installation

NOTICE: This equipment is to be installed to comply with the applicable federal, state, or local plumbing codes.

1. Ensure that you have received all of the parts shown in the parts list on page 2. Note that some Rinse-o-matic machines do not come with an additional Y-connector or adapters. If you believe you are missing parts, please contact Vitamix customer service.
2. Make sure the faucet is turned off.
3. If your faucet is equipped with a garden hose thread, proceed to step 5. Otherwise, remove the faucet aerator; if one is installed, and proceed to step 4.
4. Locate the bag of faucet adapters. Find the faucet-to-hose thread adapter (Item #1415 a) and screw onto the faucet. Additional adapters (Item #1415 b, c, d, and e) are provided to accommodate various faucet designs. Be sure to use the correct washer if it is necessary to use an adapter.
5. Screw the quick disconnect insert (Item #1437) to the Y-connector (Item #1419). (See Figure 1.)
6. Screw the Y-connector (Item #1419) to the faucet.
7. Turn the faucet on to wet the bottom of the sink. The suction cups are more effective when the sink bottom is wet and clean. If water does not flow, check the condition of the valves on each leg of the Y-connector. Turn one of the valves until water flows at a normal rate. Turn the water off once the sink bottom is wet.
8. Connect the hose assembly with quick disconnect (Item #1448) to the quick disconnect insert (Item #1437). You should hear a definitive click to indicate that the hose is properly secured to the faucet (See Figure 1).
9. Place the Rinse-o-matic unit in the bottom of the sink in the desired location and press down firmly and evenly to secure the suction cups.
10. Ensure that the valve on the leg of the Y-connector that supplies the Rinse-o-matic with water is on and that the valve on the opposite leg is off (See Figure 2).
11. Turn on the cold water. **Refer to the Troubleshooting guide (pages 6-7) if there is leakage.**

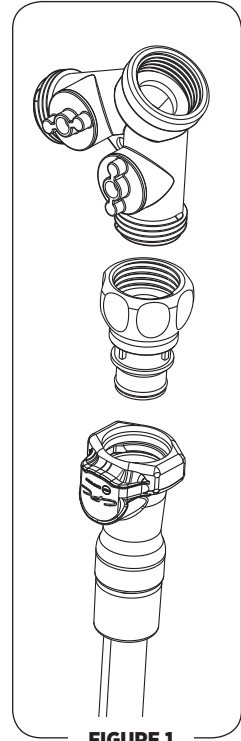


FIGURE 1

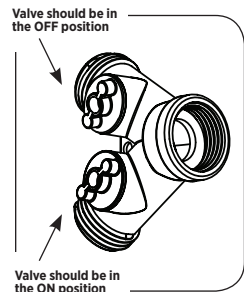


FIGURE 2

⚠ CAUTION: Turn off water supply and disconnect unit from faucet after closing time.

Maximum operating temperature: 140°F / 60°C.

Note: Periodically check water supply hose and connections for leakage.

GENERAL INSTRUCTIONS

⚠ CAUTION



Use Cold Water Only.

The use of hot water may cause scalding.

Rinsing Instructions

1. Place the item to be rinsed upside down over the top of the Rinse-o-matic until it rests on the plunger. For the best results when rinsing items with blades, ensure that the blades are not resting on the tip of the plunger before attempting to depress the plunger (Figure 4). The bottom internal surface of the item being rinsed should be in contact with the plunger (Figure 3). This ensures the best performance of the Rinse-o-matic.
2. Press down on the item to be rinsed. This will depress the plunger and release the water.
3. Hold the plunger down for 2-5 seconds or until the item is fully rinsed.
4. Lift the rinsed item from the Rinse-o-matic. The water will stop flowing.
5. Continue with the cleaning and sanitizing process necessary for the item. **Local codes should be followed for cleaning equipment.**

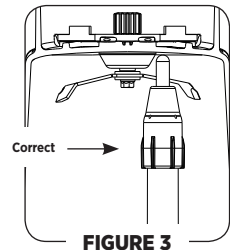


FIGURE 3

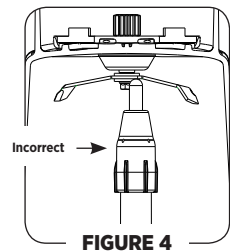


FIGURE 4

Disassembly of Hose From Base

1. Make sure the water supply is off and disconnect the unit from the water supply.
2. Remove the Rinse-o-matic from the sink and turn it over so the hose connection can be seen.
3. Using two fingers, hold the elbow collar back while pulling on the hose to disconnect it (Figure 5).
4. Pull hose carefully through the key slot.
5. After cleaning or replacement, push hose back through key slot and connect at the elbow. The elbow will grip the hose when correctly connected.

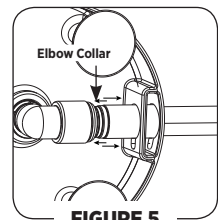


FIGURE 5

CARING FOR YOUR MACHINE

External Sanitizing

1. Make sure the water supply is off and disconnect the unit from the water supply.
2. Place the unit in a basin of warm (110°F / 43°C), clean water and add a mild dish washing detergent.
3. Wash all surfaces with a soft cloth.
4. Wash hard to reach areas with a small, soft brush.

Maintenance

The plunger and sprayhead may wear down from improper contact with the blade when rinsing containers. The wearing may affect rinsing performance and will require part replacement. Inspect the sprayhead weekly for wear. Worn sprayheads should be replaced. (Additional replacements must be ordered through your Vitamix distributor or by contacting Vitamix customer service.) Avoid damage to the plunger and sprayhead by following the correct rinsing instructions above.

Limited One-Year Warranty

Vita-Mix® Corporation will repair or replace this product with new or rebuilt parts, free of charge, in the USA, Puerto Rico and Canada, in the event of a defect in materials or workmanship for a period of one year from the date of purchase. This warranty does not cover damage which occurs from shipment, accident, misuse, abuse, neglect, mishandling, misapplication, faulty installation, set-up adjustments, improper maintenance, alterations, modifications, tampering, negligence, lack of reasonable care, water power, acts of God, or repair or service by anyone other than a service facility authorized by Vitamix. Replacement nozzle parts, seals, suction cups, hoses and connectors are available for a reasonable cost. Vitamix shall not be liable for the loss of use of the product, inconvenience, loss or any other damages, whether direct, incidental, or consequential including, without limitation, damage to other equipment resulting from the use of this product, or arising out of any breach of this warranty. This limited warranty is in lieu of any other warranty expressed or implied. No representative or any other person is authorized to make any other warranty or to assume liability not strictly in accordance with the foregoing. This limited warranty gives you specific legal rights which may vary from state to state. To obtain warranty service in the United States or Canada, contact Vitamix Technical Service toll free at 1-800-886-5235 or email commercialts@vitamix.com. To reach Vitamix Commercial Customer Service, call toll free at 1-800-437-4654 or email commercial@vitamix.com. In order to receive warranty service you may be required to provide proof of purchase. Should it become necessary to transport your Rinse-o-matic make sure it is properly packaged to avoid damage. Transportation is the user's responsibility.

TROUBLESHOOTING

A. The unit leaks at the faucet between the faucet and hose connection.

1. Turn the faucet off, disconnect the Rinse-o-matic and remove any adapters used to connect the Rinse-o-matic to the faucet. If more than one adapter was used, unscrew the adapters from each other. All adapters should be separated from each other at this point.
2. If the use of any of the provided faucet adapters was necessary, ensure that you have used the correct adapters and that the threads are undamaged. Ensure that the correct washers are in place, that they are properly installed (lying flat and seated on the internal ledge of the adapter) and that they are not damaged or deformed in any way. All adapters should have a washer. If more than one adapter is used, go to step 3. If one adapter is used, go to step 4. If no adapters are used, go to step 5.
3. If more than one adapter is used, screw these adapters together snugly by hand. Be sure not to over-tighten the adapters. After securing the two adapters together, ensure that the washer that creates the seal between them is still seated properly.
4. If one adapter is used or if you are using more than one adapter and you have completed step 3, screw the adapter(s) to the faucet snugly by hand. Be sure not to over-tighten the adapter(s) to the faucet. If possible, ensure that all of the washers are still seated properly. (Use a compact mirror to see inside the faucet if available.)
5. If no adapters are used or if one or more adapters are used and you have completed step 4, screw the quick disconnect insert into the faucet snugly by hand. Be sure not to over-tighten.
6. If you are using the garden hose thread adapter with the mesh metal screen and the previous steps have not solved the problem, repeat steps 1 through 5, but remove the mesh metal screen from the garden hose thread adapter. Be sure to put the washer back in place.

B. Water does not flow or the water pressure is very low when using the Y-connector.

1. Ensure that the faucet is on.
2. Ensure that the valve on the leg of the Y-connector that supplies the Rinse-o-matic with water is on and that the valve on the opposite leg is off when attempting to use the Rinse-o-matic. (Refer to step 10 of the installation instructions on page 3.)
3. If the water supply line that supplies the Rinse-o-matic is used to supply water to any other equipment, make sure that the equipment is not drawing water when attempting to use the Rinse-o-matic.

C. Water leaks between the spray head and the rinser or from holes on spray head.

1. Ensure that the sprayhead has been screwed on and sufficiently tightened.
2. If the sprayhead still leaks when it is sufficiently tightened, turn the water supply to the Rinse-o-matic off and relieve the residual pressure in the unit by depressing the sprayhead plunger with a container and unscrew the sprayhead. (It should be removable by hand, it is much easier with a dry sprayhead and dry hands.)
If nothing appears damaged, and there is no debris in the sprayhead, replace the sprayhead, and check for leaks.

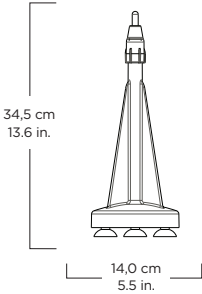
D. Water leaks between the hose and elbow collar at the bottom of the rinser base.

Ensure that the hose has been pushed into the collar completely. The elbow will grip the hose when properly connected.

If you cannot solve your problem with these suggestions, technical help is available by calling Vitamix® technical support at 800-886-5235. If you purchased your equipment outside of the U.S.A., contact your local Vitamix Distributor or telephone the Vitamix International Division at +1.440.782.2450 or email international@vitamix.com for a distributor in your country. For online help, visit www.vitamix.com/foodservice.

SPECIFICATIONS

Rinse-o-matic®



Pressure Requirements:

Cold water from faucet with at least
25 psi / 1.72 bar of pressure

Dimensions:

13.6 in / 34,5 cm

Depth: 5.5 in / 14,0 cm

Width: 5.5 in / 14,0 cm

When applicable:



To see the complete line of Vitamix® products,
visit vitamix.com/foodservice



Vita-Mix® Corporation Commercial Division

8615 Usher Road, Cleveland, Ohio 44138 U.S.A.

Tel: 440.235.0214 Email: commercial@vitamix.com

©2011 Vita-Mix Corporation. No part of this publication may be reproduced or transmitted in any form or by any means or stored in a database or retrieval system without the written permission of the Vita-Mix Corporation.

Printed in the U.S.A. 103444 10/11